

enlaces

Wedding Gallery



DANNY'S
TUXEDOS

Amorinna

2026
VOL.18

www.enlacesweddinggallery.com

A1480

Crystal Chrysanthemum BallGown

CORSETED TULLE A-LINE
BALLGOWN WITH APPLIQUES
SIZE: 4 ~ 16

● CHAMPAGNE



A1498

Josephine Beaded Mermaid Gown

FITTED BEADED GOWN WITH
ASYMMETRIC OVER THE
SHOULDER DETAIL
SIZE: 4 ~ 18

● BLUE



A1485

Mizza Tea Length Ball Gown

STRAPLESS CORSETED
TEA LENGTH BALLGOWN
WITH APPLIQUES

SIZE: 4 ~ 14

● LT BLUE



A1499

Lili Lace Mermaid Gown

FITTED LACEGOWN WITH
SLIT AND KEYHOLE CUT
OUTS IN BODICE

SIZE: 0 ~ 16

- BLACK
- LT BLUE
- PINK



A1425

Tossed Bouquet Printed Organza Dress

CORSETED A-LINE GOWN
WITH MATCHING SCARF

SIZE: 2 ~ 16

 PINK BLUE



A1496

Daisy DecoBeadedMermaidGown

FITTED BEADED MERMAID
GOWN WITH AN OVER
THE SHOULDER DETAIL

SIZE: 6 ~ 18

- BLUE
- CHAMPAGNE





A1500

Elektra Beaded Floral Gown

FITTED APPLIQUE GOWN
WITH LACE UNDERLAY
SIZE: 0 - 14

PINK ●
SAGE ●



A1482

Wallace Fitted Gown
CORSETED MERMAID OVER
THE SHOULDER GOWN WITH
APPLIQUES ALONG HEM

SIZE: 6 ~ 18

● NAVY



A1511

ClaraDecoBeadedTeaLength Dress
FITTED BEADED TEA LENGTH
GOWN WITH A FRINGE OVER
THE SHOULDER DETAIL

SIZE: 2 ~ 16

● NAVY



A1497

Lila Lace Column Gown

STRAPLESS FITTED LACE
GOWN WITH AN
ASYMMETRIC NECKLINE

SIZE: 6 ~ 18

- BLACK
- EGGPLANT



A1486

Lattice Tea Length Column Dress

STRAPLESS TEA LENGTH
BEADED GOWN WITH
DETACHABLE BOW DETAIL

SIZE: 4 ~ 16

● BLACK



A1502

Penelope Petal Gown

A FITTED BEADED GOWN WITH AN ASYMMETRIC STRAP AND TULLE SASH

SIZE: 6 ~ 18

● BLACK



A1479

Blooming Beaded Ball Gown

CORSETED TULLE OVER
THE SHOULDERBALLGOWN
WITH APPLIQUES

SIZE: 4 ~ 16

● MAUVE



A1505

Wilhelmina Winged Gown

FITTED BEADED GOWN WITH
ASYMMETRIC NECKLINE AND
DETACHABLE OVERSKIRT

SIZE: 4 ~ 18

● SILVER-NUDE



DRESS WITHOUT OVERSKIRT

A1503

Charlotte Chandelier Crystal Mermaid Gown

FITTED BEADED MERMAID GOWN

SIZE: 2 ~ 12

● CHAMPAGNE



A1507

Bella Beaded Gown

FITTED MERMAID GOWN
WITH HORSEHAIR OVER
THE SHOULDER STRAPS

SIZE: 8 ~ 18

● GREEN



A1508

Quinley Beaded Ombre Gown

FITTED APPLIQUE GOWN
WITH OVERSKIRT DETAIL

SIZE: 0 ~ 18

- BLUE
- CHAMPAGNE-BLUSH



A1501

Dita Beaded Mermaid Gown

BEADED FITTED
MERMAID GOWN WITH
HORSEHAIR NECKLINE
SIZE: 4 ~ 16

● NUDE



A1504

Odette Beaded Mermaid Gown

FITTED BEADED GOWN
WITH ASYMMETRIC OVER
THE SHOULDER DETAIL
SIZE: 6 ~ 18

● MAUVE



A1489

Sylvie Beaded Column Gown
FITTED BEADED GOWN
WITH SASHDETAIL

SIZE: 6 ~ 20

BLACK



A1495

Julia Jeweled Chiffon

Gown

CHIFFONONE SHOULDER
GOWN WITHSASH SIZE: 4 ~ 18

MARIGOLD



A1506

Butterfly Wing Mermaid Gown
FITTED BEADED MERMAID
GOWN WITH ASYMMETRIC
NECKLINE

SIZE: 4 ~ 12

FUCHSIA



A1510

Jordan Deco Beaded Gown
CORSETED BEADED GOWN
WITH FRINGE OVER THE
SHOULDER STRAPS

SIZE: 4 ~ 18

SILVER-NUDE



DETACHABLE STRAP





Pastel Romance

A lighthearted gowns in soft,
romantic hues

AA001

Morgan Feathered Cape
TULLE CAPE WITH BEADING
ALONG SHOULDER

- BLACK
- DUSTY ROSE
- SAGE
- OFF WHITE



A1494

Sculptural Sequin Column Dress

CORSETED MERMAID GOWN
WITH BEADING AT NECKLINE

SIZE: 0 ~ 18

- BLACK
- DUSTY ROSE
- SAGE



A1483

Eloise Tulle Ruffle Ball Gown

BEADED CORSETED BALLGOWN
WITH A RUFFLE TULLESKIRT

SIZE: 0 ~ 16

- ROSE PINK
- SMOKY BLUE



A1484

Tossed Meadow Fitted Column Dress
CORSETED MERMAID GOWN
WITH A MATCHING SCARF

SIZE: 4 ~ 18

- MAUVE
- PARIS BLUE



A1492

Crystal Mae Mermaid Gown
BEADED MERMAID GOWN
WITH CRYSTAL BOW
NECKLINE DETAIL

SIZE: 0 ~ 16

- SAGE
- SILVER-NUDE



A1490

Beaded Bellflower Bustier Ball Gown

TULLE BALLGOWN WITH
FLORAL APPLIQUES

SIZE: 0 ~ 14

● BLUE



A1491

Cynthia Structured Ball Gown

TULLE BALLGOWN
WITH AN ASYMMETRIC
HORSEHAIR NECKLINE

SIZE: 2 ~ 16

- CHAMPAGNE
- PINK
- SAGE
- SMOKY BLUE
- NAVY





A1493

DianaTulleMermaidGown

FITTEDCRYSTAL
MERMAID GOWN WITH

TULLE RUFFLE SKIRT

SIZE: 0 ~ 14

BLUE ●
BLUSH ●



A1488

Flowing Water Mermaid Gown

FITTED BEADED GOWN
WITH DETACHABLE OVER
THE SHOULDER DETAIL

SIZE: 6 ~ 18

- NAVY
- SAGE



DRESS WITHOUT BOLERO



A1347

Jayne Fit and Flare Dress

SHORT SEQUINFLORAL
PRINT A-LINE DRESS

SIZE: 2 ~ 16

- GREEN
- NAVY
- OFF WHITE-NUDE
- ORCHID
- ROSE GOLD



A1487

Carmen Feathered Fitted Column Dress
FITTED BEADED TEAL LENGTH GOWN
WITH FEATHER DETAILS

SIZE: 2 ~ 14

● LT BLUE



A1481

Sequin Siren Mermaid Gown
FITTED BEADED
MERMAID GOWN

SIZE: 4 ~ 16

NAVY ●
NUDE GOLD ●



A1477

Waltzing Beaded Bouquet Ball Gown
CORSETED TULLE BALL
GOWN WITH APPLIQUES

SIZE: 2 ~ 14

MULTI



A1478

Weaving Ivy Beaded

Gown

SWEETHEART APPLIQUE
TULLE BALL GOWN
SIZE: 2 ~ 14

BLUE



A1399

FLORAL EMBELLISHED

A-LINE GOWN WITH
MATCHING CHOKER

SIZE: 0 ~ 16

- DARK SAGE
- DEEP BLUE
- DUSTY ROSE



A1396

SHEER PLEATED
CORSET GOWN

SIZE: 0 ~ 14

- BLUSH
- DARK SAGE
- SMOKY BLUE



A1361

TRANSLUCENT BEAD GOWN
W DETACHABLE OVERSKIRT

SIZE:0~12

● LT BLUE



DRESS WITHOUT OVERSKIRT



A1417

LACE APPLIQUED A-LINE
LAYERED TULLE GOWN

SIZE: 0 ~ 18

- BLUE
- DUSTY ROSE
- SAGE

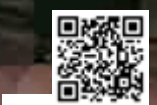


A1363

FITTED BEADED
EVENING GOWN

SIZE: 2 ~ 18

- CORAL
- NAVY



A1429

SEQUIN LACE APPLIQUE
MERMAID GOWN
SIZE: 2 ~ 8

● LT BLUE



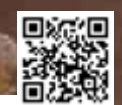
A1430

STRAPLESS FLORAL
PRINTED BALL GOWN
SIZE: 2 ~ 10

● YELLOW



DETACHABLE SLEEVE



A1258

EMBELLISHED A-LINE
TULLE BALL GOWN
SIZE: 2 ~ 14

- DUSTY BLUE
- DUSTY LAVENDER
- DUSTY SAGE



A1035

PORTRAIT OF A ROSE
PRINTED ORGANZA GOWN
SIZE: 2 ~ 16

MULTI ●



A1437

3D ORGANZA BUTTERFLY
LACE GOWN

SIZE: 0 ~ 14

● LT BLUE



A1294

STRAPLESS TULLE
APPLIQUE BALLGOWN

SIZE: 2 ~ 14

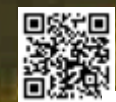
● BLUSH
● PARIS BLUE



A1336

FLORAL PRINTED
RUFFLE GOWN
SIZE: 2 ~ 18

- BLACK
- CREAM



A1288

WHITE-LINEDRESSWITH
MULTICOLOREDFLORAL
EMBELLISHMENT
SIZE: 2 ~ 16

- WHITE-FLOWERS



A1463

PRINTRUFFLECORSETGOWN

SIZE: 0 ~ 10

● MULTI



A1383

WATERCOLOR FLORAL

A-LINE GOWN

SIZE: 0 ~ 12

● LT BLUE

● PEACH



A1415

GLIMMER LACE CORSET

A-LINE GOWN
SIZE:0~16

- SAGE
- SILVER
- SMOKY BLUE



A1416

CRYSTALLIZED LACE
APPLIQUE TULLE GOWN

SIZE: 0 ~ 16

- DUSTY ROSE
- EGGPLANT



A1459

SUN MOON AND THE STARS
EMBROIDERY GOWN

SIZE: 4 ~ 16

NUDE ●



A1053

LEILA ONESHOLDER GOWN

SIZE: 2 ~ 16

- BLACK
- BLUE
- BLUSH
- LILAC
- RED
- SAGE
- YELLOW



A1089

PENELOPE BLOSSOM GOWN

WITH OVERSKIRT

SIZE: 2 ~ 16

- BLUSH-MAUVE
- PARIS BLUE
- SAGE



A1387

STRAPLESS EMBELLISHED
TULLEBALL GOWN

SIZE: 0 ~ 16

- SAGE
- SMOKY BLUE



A1420

SAGE FLORAL PRINT
LAYERED A-LINE DRESS

SIZE: 0 ~ 16

- SAGE



A1394

PASTEL MEDLEY A-LINE GOWN

SIZE: 4 ~ 16

MAUVE



A1455

ROMANCE EMBROIDERY
A-LINE CORSET GOWN

SIZE: 2 ~ 14

MAUVE



A1392

ONE SHOULDER
FULLY BEADED
FLORAL MOTIF GOWN
SIZE: 4 ~ 18

- BLACK-NUDE
- GREENERY



A1257

OFF THE SHOULDER
EMBELLISHED GOWN
SIZE: 4 ~ 18

DUSTY MAUVE ●



A1436

PLEATED FAN BODICE
FITTED PEARL GOWN
SIZE: 4 ~ 18

- BLUE
- CHAMPAGNE
- SAGE



A1393

METALLIC FLORAL
MERMAID GOWN
SIZE: 0 ~ 16

- BLUE



A1398

STRAPLESS A-LINE DRESS
& REMOVABLE SLEEVES
SIZE: 2 ~ 16

ENGLISH VIOLET



SEPARATE SLEEVES



A1458

UNDER THE SEA
EMBROIDERY GOWN
SIZE: 0 ~ 16

SILVER



DETACHABLE RIBBON



A1365

STRAPLESS OVERSKIRT
GLIMMING GOWN
SIZE: 4 ~ 18

- CHAMPAGNE
- LT BLUE



A1421

FOLIAGE BEADED LACE
MERMAID GOWN
SIZE: 0 ~ 16

- DUSTY BLUE
- SAGE



A1355

PLEATED SATIN &
EMBELLISHED A-LINE GOWN

SIZE: 4 ~ 18

- BLACK
- NAVY



A1439

PLEATED ORIGAMI LIQUID
TAFFETAGOWN

SIZE: 0 ~ 16

- SMOKY BLUE



A1167

AZURITE BEADED
LONGSLEEVE A-LINE GOWN

SIZE: 4 ~ 18

● BLUE

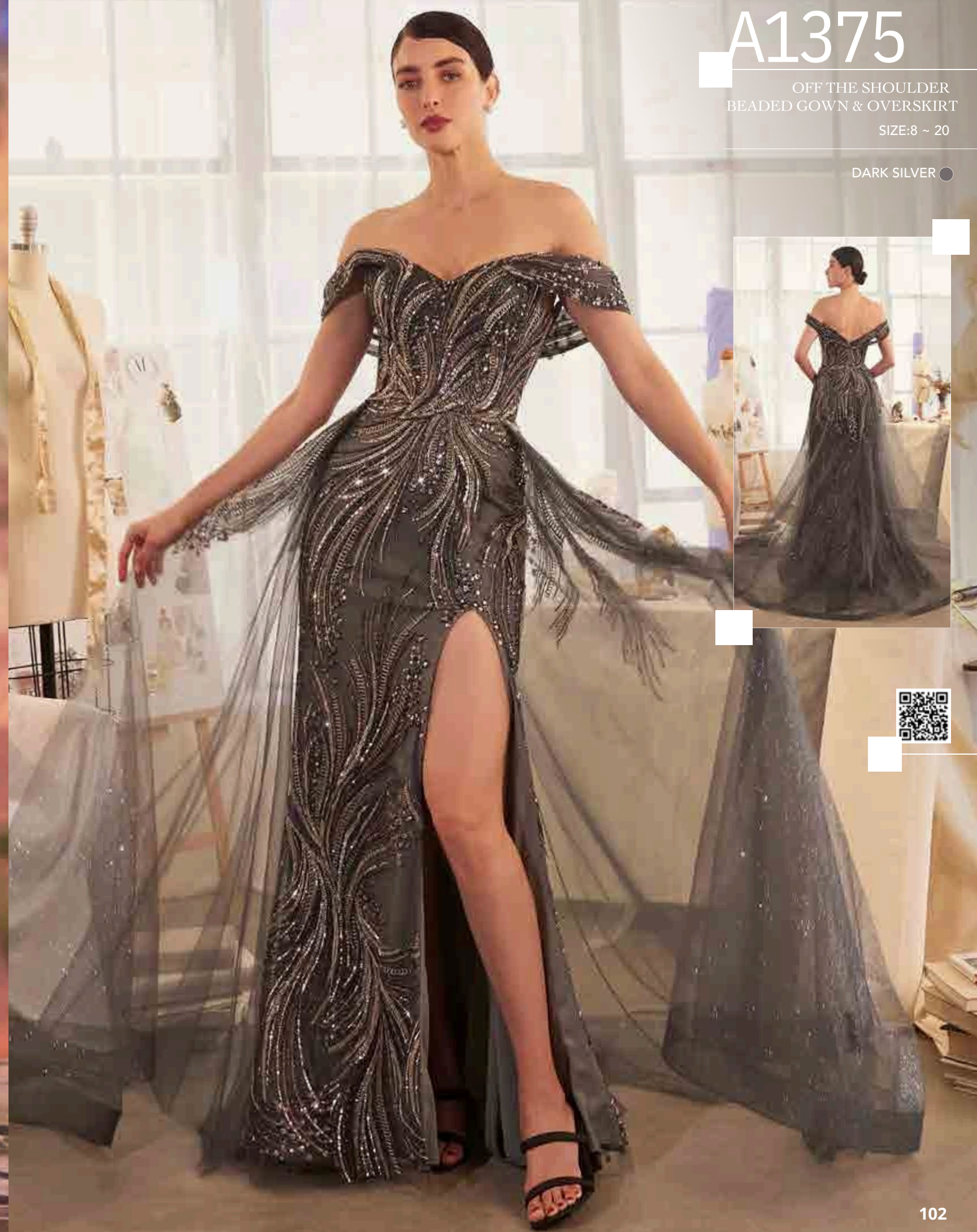


A1375

OFF THE SHOULDER
BEADED GOWN & OVERSKIRT

SIZE: 8 ~ 20

● DARK SILVER



A1424

LIQUID TAFFETA
OFF SHOULDER GOWN

SIZE: 4 ~ 16

- EMERALD
- NAVY
- RED



A0926

SAVANNAH SEQUIN GOWN

SIZE: 8 ~ 22

COPPER ●



A1351

ESTATE FLORAL TULLE GOWN

SIZE: 6 ~ 18

- ENGLISH VIOLET
- MAUVE
- SOFT NAVY



MA108

LACE LAYERED TULLE
LONG SLEEVE GOWN

SIZE: 6 ~ 16

- DUSTY BLUE
- DUSTY ROSE



MA103

SILVER CORONET GOWN

SIZE: 4 ~ 22

SILVER



A1377

FLORAL MOTIF SEQUIN
MERMAID GOWN

SIZE: 10 ~ 22

BLACK-NUDE





WL057

Tulle Blooming Ivy Dress

CORSETED OVER THE SHOULDER TULLE BALLGOWN WITH APPLIQUES
SIZE: 4 ~ 20

● OFF WHITE-NUDE



FLORAL LACE APPLIQUE WITH 3D FLOWER EMBELLISHMENT



WL062

Aphrodite Bloom Mermaid Gown

LACE MERMAID GOWN WITH
APPLIQUES, RUFFLED SKIRT
AND 30" VEIL

SIZE: 4 ~ 18

● OFF WHITE-NUDE



30" VEIL



WL058

Flora Ball Gown

TULLE BALLGOWN
WITH FLORAL APPLIQUES

SIZE: 4 ~ 16

● OFF WHITE-NUDE



WL072

Blooming Dianthus Mermaid Gown

FITTED LACE
MERMAID GOWN

SIZE: 4 ~ 16

● OFF WHITE-NUDE



BEADED FLOWER APPLIQUE
OVER CHANTILLY LACE



WL059

Corseted ballgown with floral appliques

CORSETED BALLGOWN
WITH FLORAL APPLIQUES

SIZE: 6 ~ 16

● OFF WHITE-NUDE



TIERED CASCADE RUFFLE
SKIRT CONSTRUCTION
WITH NOVELTY LILY ARTWORK APPLIQUE

WL065

Hera Lace Mermaid Gown

FITTED LACE MERMAID GOWN
WITH REMOVABLE SLEEVES
WITH CHOKER

SIZE: 4 ~ 18

● OFF WHITE



CHOKER



ELONGATED SCALLOP HEM

WL064

Blooming Gardenia Ball Gown

BALLGOWN WITH
FLORAL APPLIQUES AND
PLUNGING NECKLINE
SIZE: 4 ~ 18

● OFF WHITE



WL070

Persephone Ball Gown

A-LINE GOWN WITH FLORAL APPLIQUES WITH 33" VEIL

SIZE: 4 ~ 18

● OFF WHITE-NUDE



33" VEIL



WL066

Lamia Beaded Mermaid Gown

CORSETED FITTED MERMAID
GOWN WITH BEADED
APPLIQUES

SIZE: 4 ~ 16

● OFF WHITE



BEADED FABRIC



WL089

Wisteria Tulle Ball Gown

TULLE OVER THE
SHOULDER BALLGOWN
WITH BEADED APPLIQUES

SIZE: 4 ~ 18

● OFF WHITE



BEAD APPLIQUE OVER
PLEATED TULLE



WL088

Marilyn Lace Mermaid Gown

CORSETED FITTED
MERMAID LACE GOWN
SIZE: 4 ~ 16

● OFF WHITE



A woman with long brown hair is standing in a lush garden, wearing a long, flowing white lace gown. She is looking down and to her right. The background features a stone building with columns and a large green bush with pink flowers. The overall scene is bright and elegant.

Made for CCrafted for the celebration

the moments that follow — gowns that feel
ceremonial, sculptural, and deeply personal

WL069

Venus Lace Ball Gown

CORSETED LACE A-LINE
GOWN WITH PEARL DETAILS

SIZE: 4 ~ 20

● OFF WHITE-NUDE



WL060

Trailing Ivy Mermaid Gown

CORSETED FITTED BEADED
MERMAID GOWN WITH 48" VEIL

SIZE: 6 ~ 14

● OFF WHITE-NUDE



48" VEIL



WL061

Antheia Lace Ball Gown

CORSETED LACE BALLGOWN
WITH SCALLOPED NECKLINE

SIZE: 4 ~ 18

● OFF WHITE



SEQUIN & BEADED
CORDED LACE APPLIQUE
ON CHANTILLY LACE



WL067

Floral Victoria Ball Gown

LACE OVER THE SHOULDER BALLGOWN

SIZE: 6 ~ 20

● OFF WHITE-NUDE



OFF SHOULDER LONG SLEEVE

WL071

Athena Lace Mermaid Gown

CORSETED FITTED
MERMAID GOWN
WITH LACE BOLERO
SIZE: 4 ~ 18

● OFF WHITE-NUDE



DRESS WITHOUT BOLERO



WL068

Isabella Mermaid Gown

FITTED LACE MERMAID
GOWN WITH DETACHABLE
BOW AND SASH
SIZE: 6 ~ 20

● OFF WHITE-NUDE



DRESS WITHOUT SASH



DETACHABLE RIBBON SASH

WL090

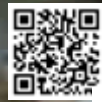
Audrey Lace Ball Gown

LACE OVER THE
SHOULDER BALLGOWN
WITH BEADED APPLIQUES
SIZE: 4 ~ 20

● OFF WHITE-NUDE



CLEAR SEQUIN
VINTAGE LACE' OVER
PLEATED TULLE DRAPE



WL099

Lilith Lace Mermaid Gown

FITTED LACE MERMAID
GOWN WITH BEADED STRAPS
OVER THE SHOULDER STRAPS

SIZE: 6 ~ 14

● OFF WHITE



WL063

Marie Ball Gown

A-LINE GOWN WITH
FLORAL APPLIQUE
HEADBAND

SIZE: 8 ~ 14

● OFF WHITE-NUDE



HEADBAND



WL087

Tulle Bouquet Ball Gown

TULLEBALLGOWNWITH
FLORALAPPLIQUES

SIZE: 4 ~ 18

● OFF WHITE



A1082W

CATHERINE CAP SLEEVE
LACE BALL GOWN

SIZE: 4 ~ 18

● OFF WHITE



A1028W

GARDENIA LACE
WEDDINGBALL GOWN

SIZE: 4 ~ 20

● FRENCH WHITE



A1072W

AVERY LACE
WEDDING GOWN

SIZE: 4 ~ 18

● OFF WHITE



A1067W A1067WC

YVAINÉ WEDDING GOWN

SIZE: 6 ~ 16 C SIZE: 18 ~ 24

● OFF WHITE-NUDE ●



CD860W

SPARKLY LACE WEDDING BALL GOWN
& REMOVABLE OFF SHOULDER PIECE

SIZE: 4 ~ 16

● OFF WHITE



CDS432W

LACE MERMAID
WEDDING DRESS

SIZE: 4 ~ 18

● OFF WHITE



WL051

OFF THE SHOULDER LACE
& TULLE WEDDING
MERMAID GOWN
SIZE: 4 ~ 16

● OFF WHITE



WL029

A-LINE EMBELLISHED LACE
& TULLE WEDDING DRESS
SIZE: 6 ~ 16

● OFF WHITE



WL031

DETACHABLE WINGS
MERMAID WEDDING GOWN
SIZE:4~16

● OFF WHITE



WL016

STRAPLESS DROP WAIST
CASCADING WEDDING DRESS
SIZE:4~16

● OFF WHITE-NUDE



WL017

FLORAL APPLIQUE ADORED
STRAPLESS WEDDING GOWN
SIZE:4~18

● OFF WHITE-NUDE



WL044

CORDED LACE WEDDING DRESS
& REMOVABLE BALL OVERSKIRT
SIZE:4~14

● OFF WHITE-NUDE



DRESS WITHOUT OVERSKIRT



WL034

LOTUS LACE STRAPLESS GOWN
WITH MATCHING 108" VEIL SET

SIZE: 6~16

● OFF WHITE



108" VEIL



WL036

LONG SLEEVE LACE
MERMAID BRIDAL GOWN
SIZE:4~18

● OFF WHITE-NUDE



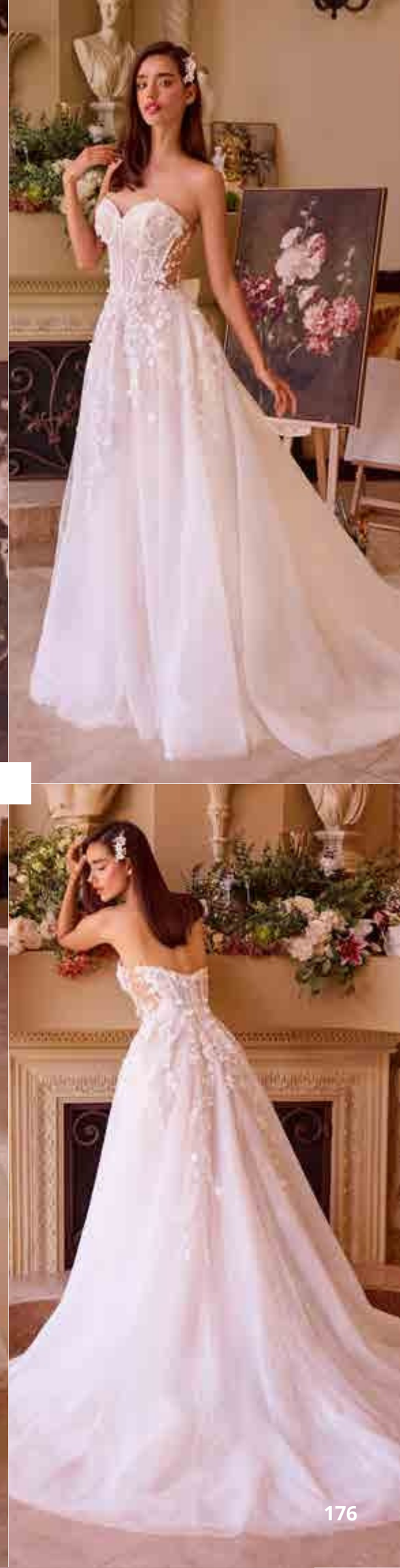
WL032

FLORAL PLEATED CORSET

WEDDING BALL GOWN
WITH SEPARATE SLEEVES

SIZE: 4 ~ 16

● OFF WHITE



WL052

DEEP SWEETHEART
STRAPLESS BRIDAL BALL GOWN
SIZE:6~16

● OFF WHITE



WL033

STRAPLESS MERMAID BRIDAL
GOWN & SEPARATE SLEEVES

SIZE:6~16

● OFF WHITE



WL035

BYZANTINE LACE & TULLE
SHORT SLEEVE WEDDING GOWN
SIZE:8~16

● OFF WHITE-NUDE



WL018

LACE APPLIQUED
WEDDING BALL GOWN
SIZE:6~18

● OFF WHITE



WL037

STRAPLESS WEDDING BALL
GOWN & LACE BOLERO SET
SIZE:4~18

● OFF WHITE



WL042

ELIZABETHAN LACE BRIDAL
GOWN & SEPARATE
LONG SLV TULLE BLOUSE
SIZE: 8 ~ 16

● OFF WHITE-NUDE



GOWN WITHOUT SEPARATE
LONG SLEEVE TULLE BLOUSE

WL043

TULIP SEQUIN
EMBROIDERED
WEDDING BALL GOWN
SIZE: 6 ~ 18

● OFF WHITE-NUDE



WL038

ILLUSION CAP SLEEVE
BRIDAL BALL GOWN
SIZE:6~18

● OFF WHITE-NUDE



WL040

SHORT SLV WEDDING GOWN
& SEPARATE CHANTILLY CORSET
MERMAID INSIDE GOWN

SIZE: 6 ~ 16

● OFF WHITE



CHANTILLY CORSET
MERMAID INSIDE GOWN

WL053

FITTED LACE
WEDDING GOWN

SIZE: 4-14

● OFF WHITE



A1022

BOHEMIAN LACE
MERMAID GOWN
SIZE:4~16

● OFF WHITE



WL082

STRAPLESS BRIDAL MINI
DRESS WITH EMBELLISHED
LACE APPLIQUE
SIZE: 2 ~ 16

● OFF WHITE-NUDE



WL084

STRAPLESS SHORT LACE
MIDI WEDDING DRESS
SIZE: 4 ~ 16

● OFF WHITE-NUDE



WL085

DIMENSIONAL FLORAL
& LACE STRAPLESS SHORT
BRIDAL MINI DRESS

SIZE: 2 ~ 16

● OFF WHITE-NUDE



WL083

DEEP SWEETHEART
STRAPLESS MIDI SHORT
BRIDAL DRESS

SIZE: 2 ~ 14

● OFF WHITE



WL081

WEDDING MINI WITH
BEADED FLORAL
APPLIQUE
SIZE: 4 ~ 14

● OFF WHITE



A1012

WREN DRESS
SIZE: 2 ~ 16

WHITE ●



WL020

SHORT FLORAL APPLIQUED
BRIDAL PARTY DRESS
SIZE: 4 ~ 14

● OFF WHITE



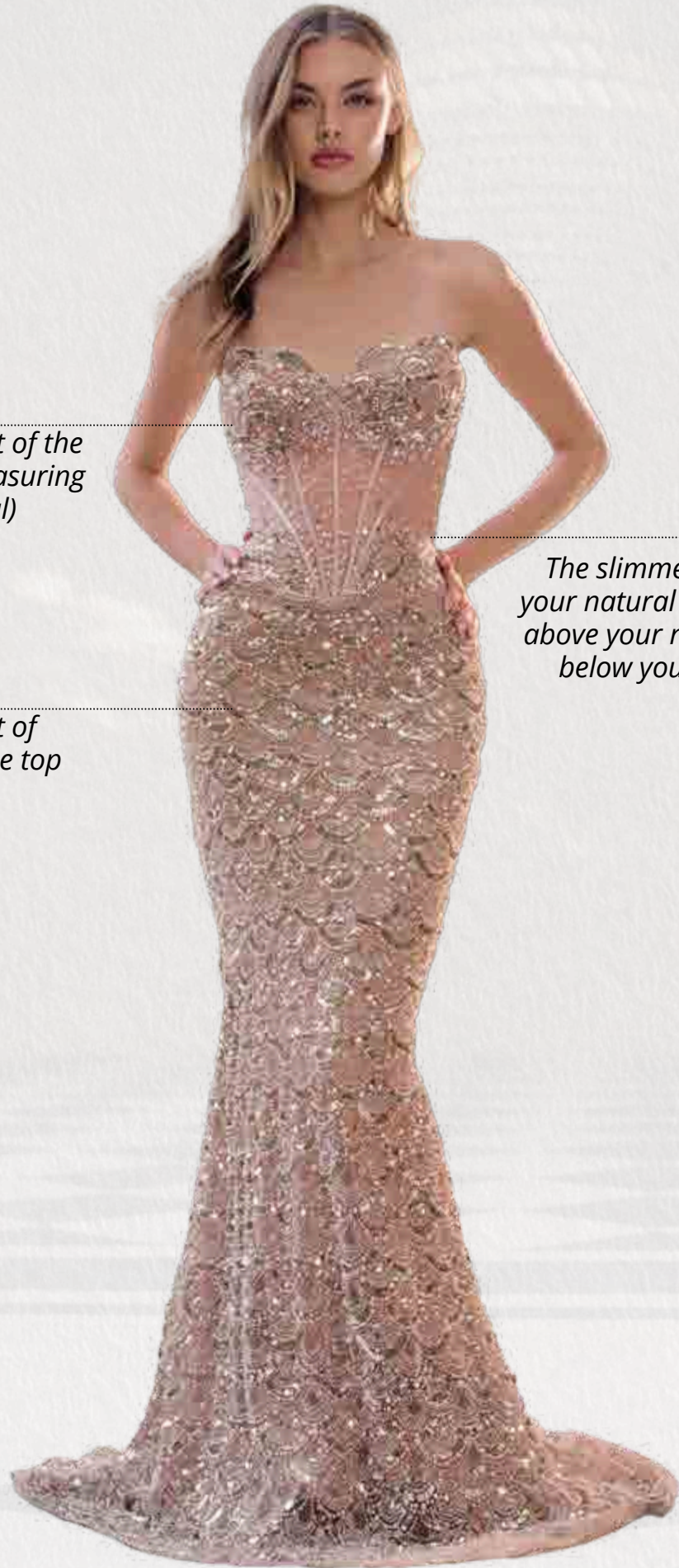
WL021

OFF THE SHOULDER LACE
SHORT BRIDAL DRESS
SIZE: 4 ~ 16

● OFF WHITE







BUST

The fullest part of the bust (keep measuring tape horizontal)

WAIST

The slimmest part of your natural waistline: above your navel and below your ribcage

LOW HIP

The fullest part of your hips at the top of your legs

SIZE CHART

measure your chest-waist-hip

to find your perfect size

INDICATED IN INCHES
SIZE CHART IS UNIQUE TO ANDREA & LEO

Chart #0

SIZE	0	2	4	6	8	10	12	14	16	18	20	22	24
BUST	31	32	34	35	36	37.5	39	41	43.25	45.5	48	50.5	53.5
WAIST	24	25	27	28	29	30.5	32.25	34.25	36.5	39	42	45	48
HIP	34	35	37	38	39	40.5	42.25	44.25	46.5	49	52	55	58

Chart #AL

SIZE	2	4	6	8	10	12	14	16	18	20	22	24
BUST	32.5	34	35	36	37	38	40	42	44	47	50	53
WAIST	24	26.5	27.5	29	30	31	33	35	37	40	43	46
HIP	36	37.5	38.5	39.5	40.5	41.5	43.5	46	48	50.5	53.5	56.5

RETURN & EXCHANGE

• All sales are Final on our merchandise. No refunds or returns are accepted. • We request that you carefully select your online purchases. Please keep in mind that we follow Universal / Industry Standard for Return and Exchange policy of formal wear. • We do not accept returns and exchange unless the item was damaged upon receipt. Unless dresses are damaged, defective, or incorrectly delivered (i.e. incorrect item is delivered, delivered past wear date, delivered to address other than provided at time of order, etc.), they CANNOT be returned or exchanged. If the dress you received is damaged, defective, or incorrectly delivered, we will accept a return for re-inspection in order to assess the problem and determine the best way to correct it. • You wish to return for re-inspection must be shipped back to our store and received within 5 business days from time the package was delivered. The dress MUST be shipped before the wear date as submitted on your order. Refunds will not be credited or replacements/ repairs will not be made if we do not receive your return within 5 business days from the day the package was delivered to you, no exceptions. • Returned dress must be in excellent, unworn condition, packaged securely in the original or comparable packaging. • When returned for re-inspection, the dress must be in perfect, new, never worn, condition as received at the time of delivery. It must not be damaged, soiled, stained, torn, and be free of offensive odors (i.e. smoke). Customer is responsible for all return shipping costs. We will not refund return shipping fees unless the dress is determined to be damaged, defective, or incorrectly delivered. In order to return your dress for re-inspection,

* We cannot send you the exchange until the damaged merchandise is received by us, and subject may take up to 5 business days.

* Shipping charges and rush fees are non-refundable.

* Special Sale items / Clearance items are Final Sale, and they are not returnable. No exception.

enlaces

Wedding Gallery



**DANNY'S
TUXEDOS**

Amorinna



55 5298 2305 / 55 5709 8360



www.enlacesweddinggallery.com



Lope de Vega 345, Polanco,
CDMX.